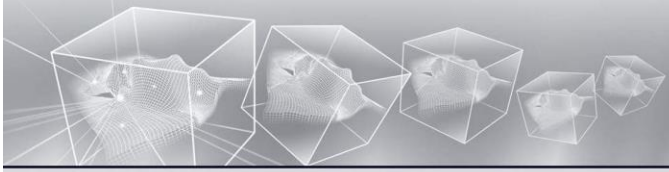


**Capabilities
in the task of prospecting, exploration and
development
oil and gas fields**



Complex projects

- **Seismic exploration and other geophysical investigations;**
- **Services in drilling, researches and operations in wells;**
- **Counting and audit of stock;**
- **Analysis of field development planning and intensification of well workover;**
- **Reservoir modeling, extraction predicting and monitoring of field development**



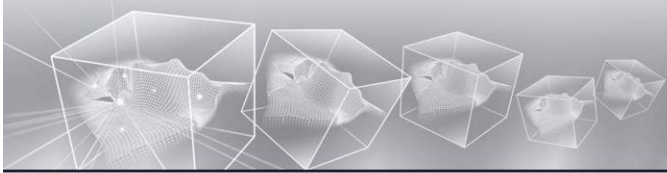


Integrated projects

Design and construction of infrastructure :

- A feasibility of expediency of field development, design its industrial development;
- Exploratory and development drilling, construction of objects for oil and gas production;
- Operating up exploration fields, production optimization.

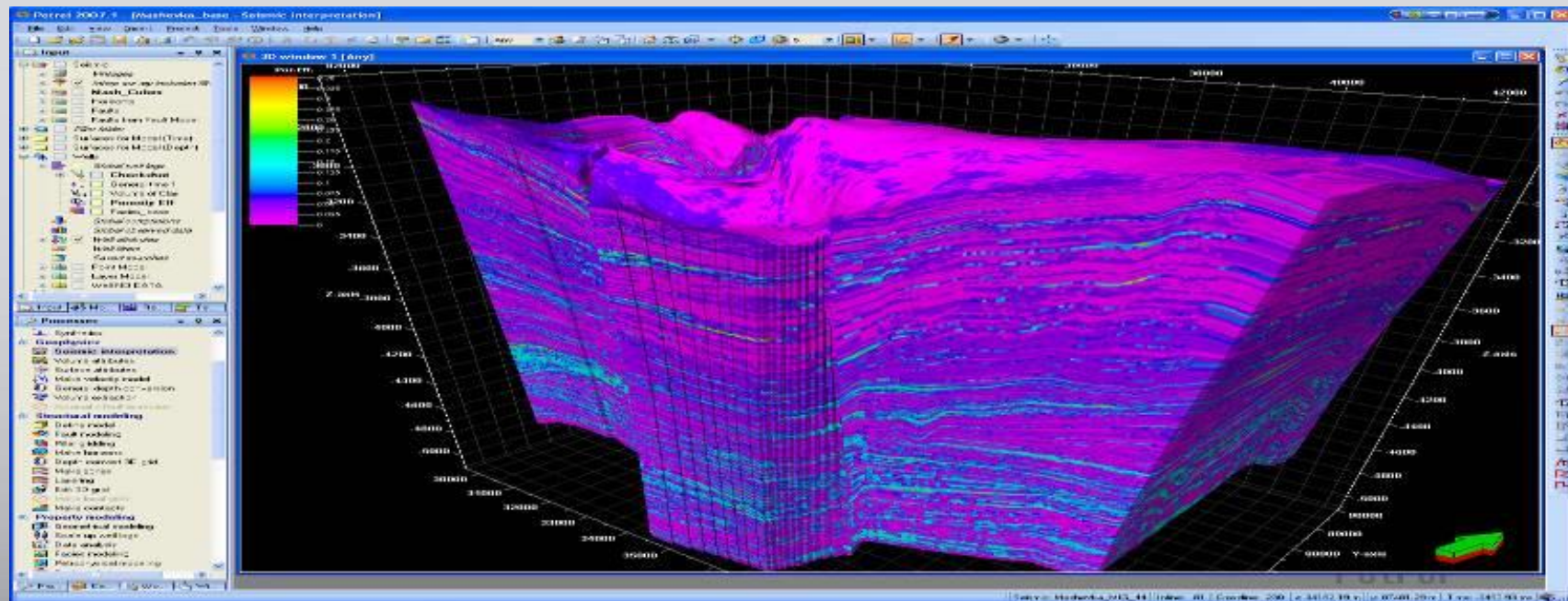




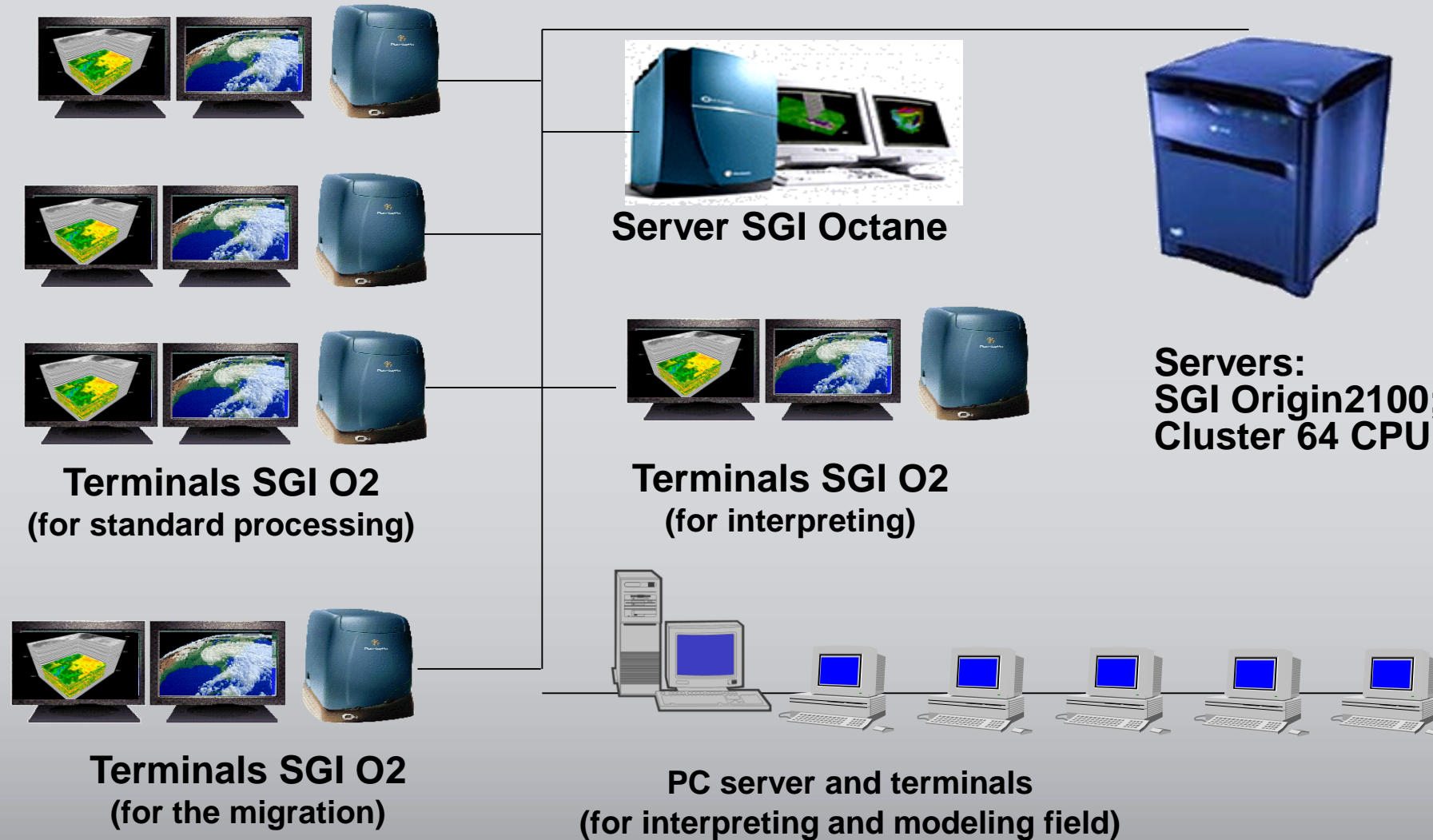
Integrated projects

Information support of exploration and production :

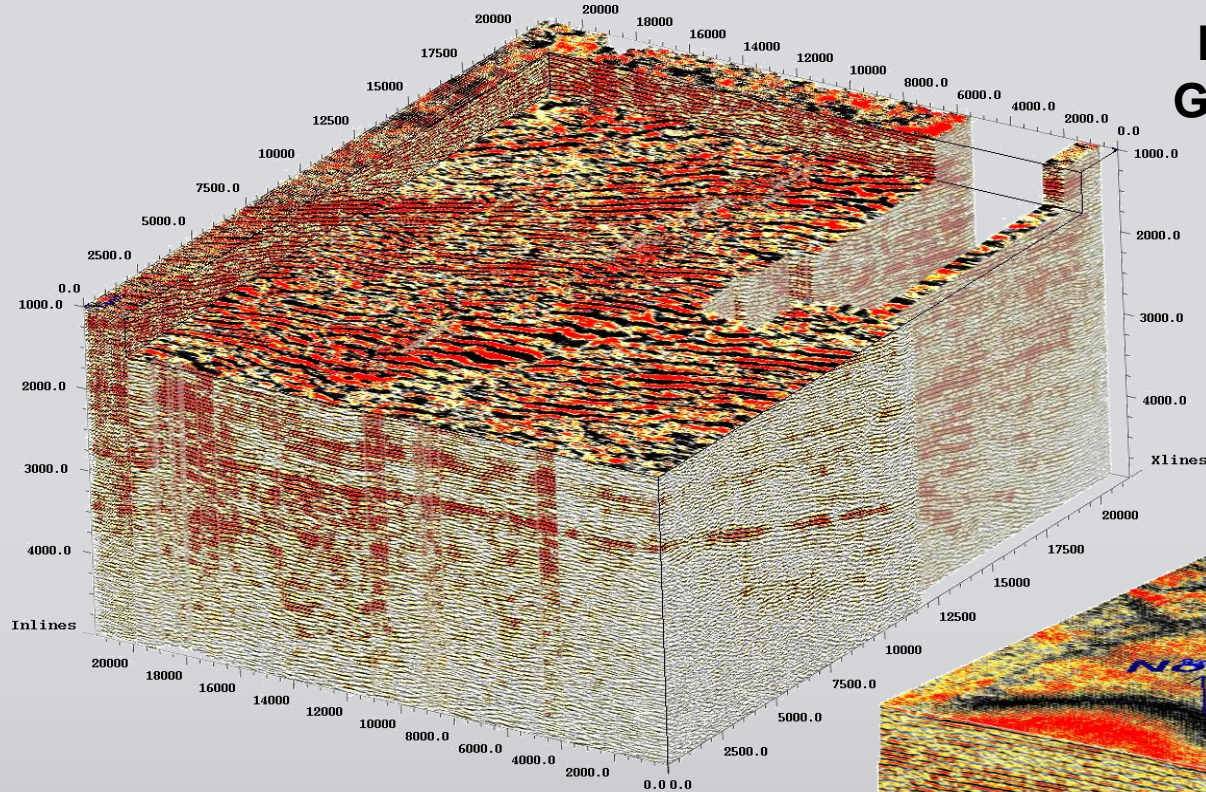
- Creating and managing databases on fields;
- Analysis of investment projects (investments, timing, risks, etc.);
- Service training and professional development specialists;
- Certification of specialists and equipment;
- Ecological monitoring and HSE management .



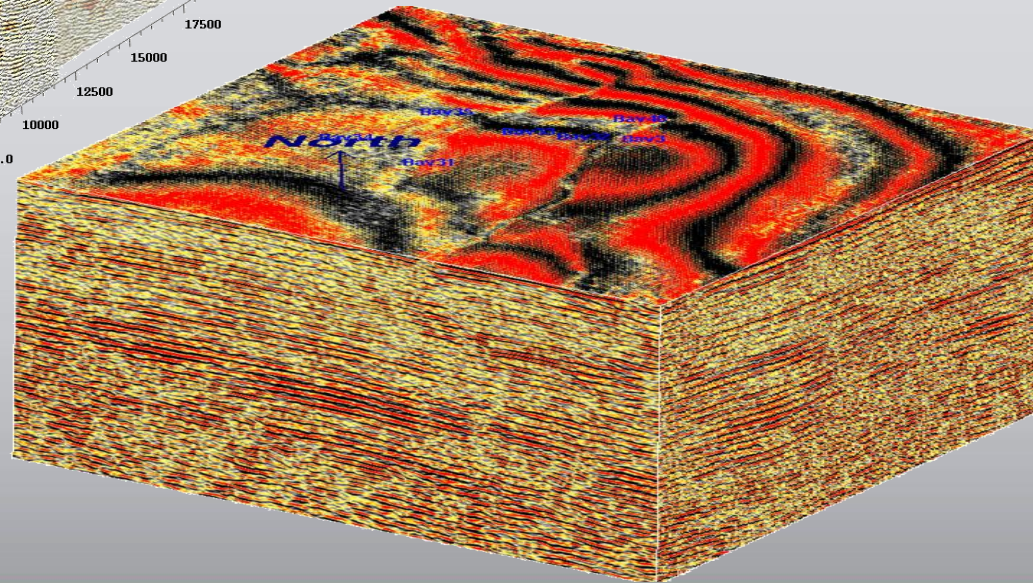
Technological equipment



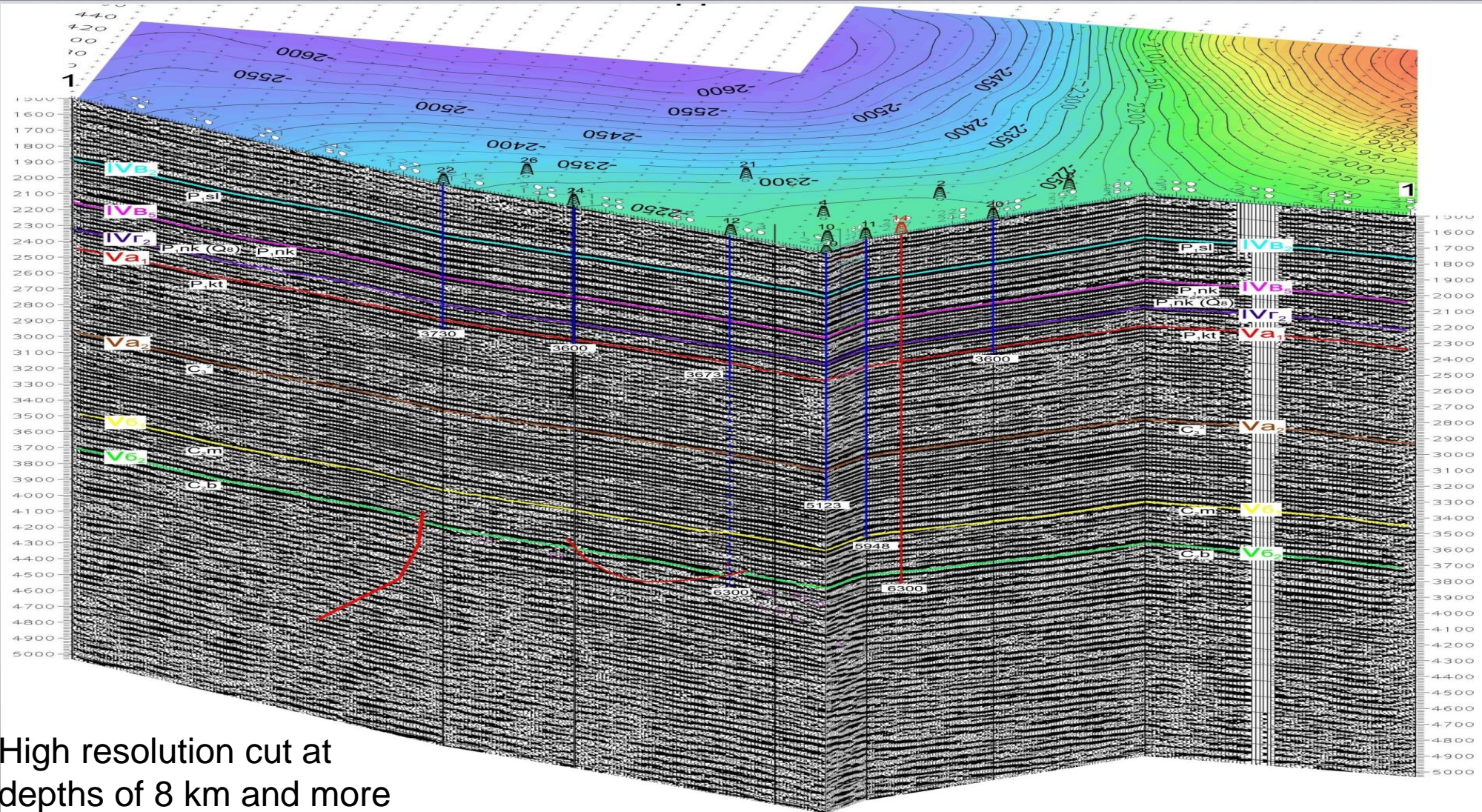
Data processing. 3-D seismic prospecting.



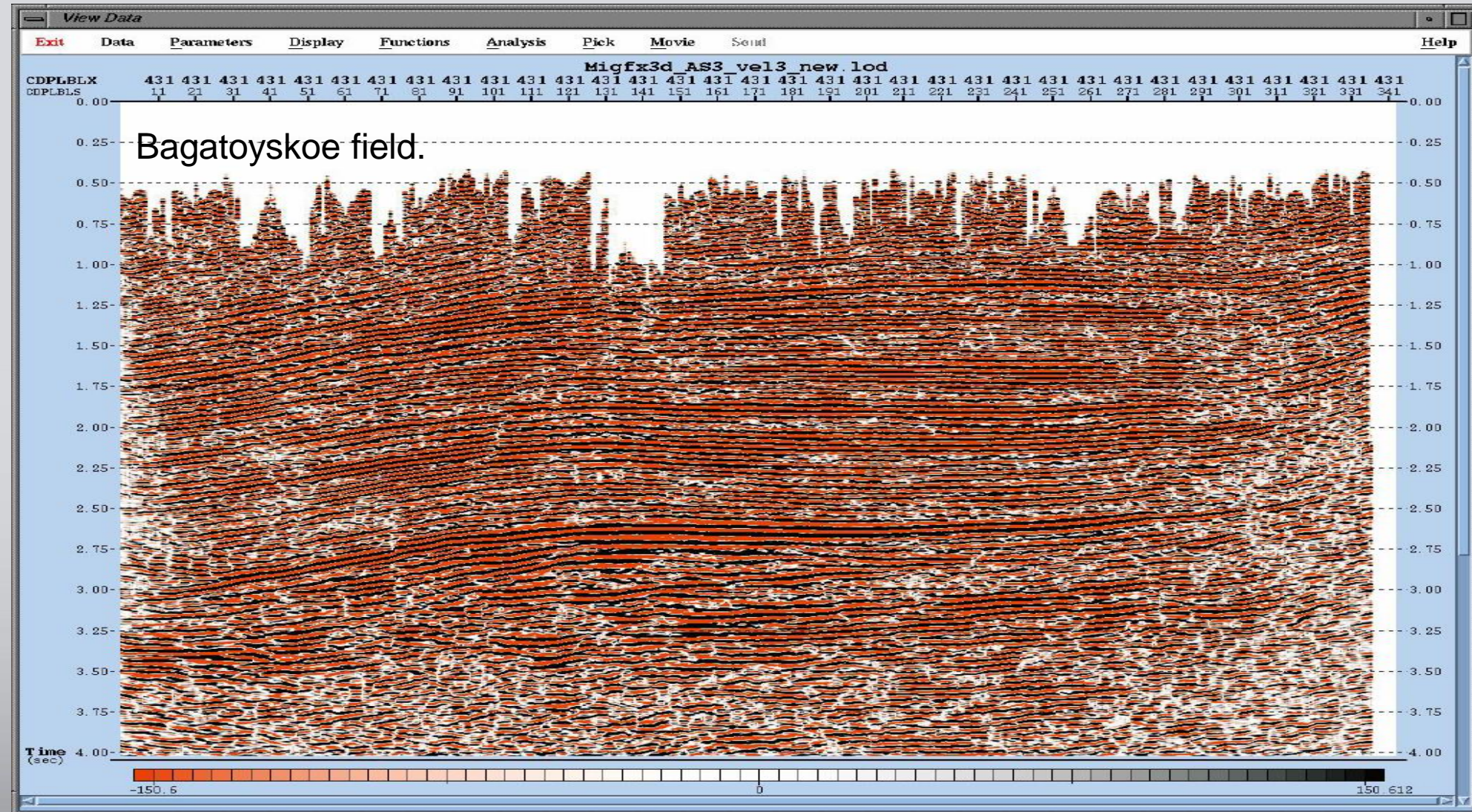
More than 400 programs Paradigma Geophysical, Shlumberger and other manufacturers for standard and detailed processing which allow to get seismic cube, horizontal cutoff and voluminous geological field models of high quality



The largest project of seismic volumetric in Ukraine. Kobzivskoe field.

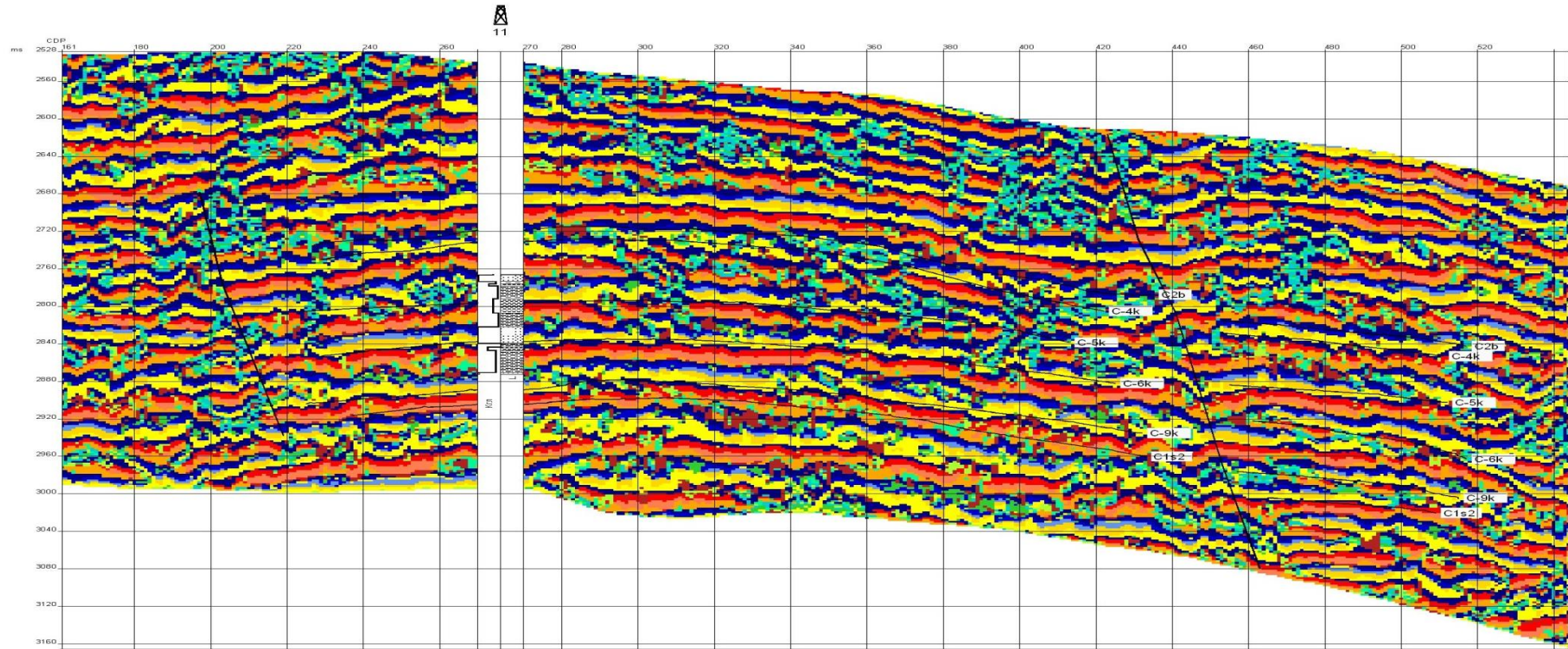


For the first time
and build of PSD



For the first time in Ukraine executed the forecast of lithology and the porosity of oil stratum according to a complex volumetric seismic data interpretation

БАЙРАЦКАЯ ПЛОЩАДЬ. Многофакторная классификация атрибутов временного разреза в интервале C1s2-C2b. Профиль 94с.



Условные обозначения:

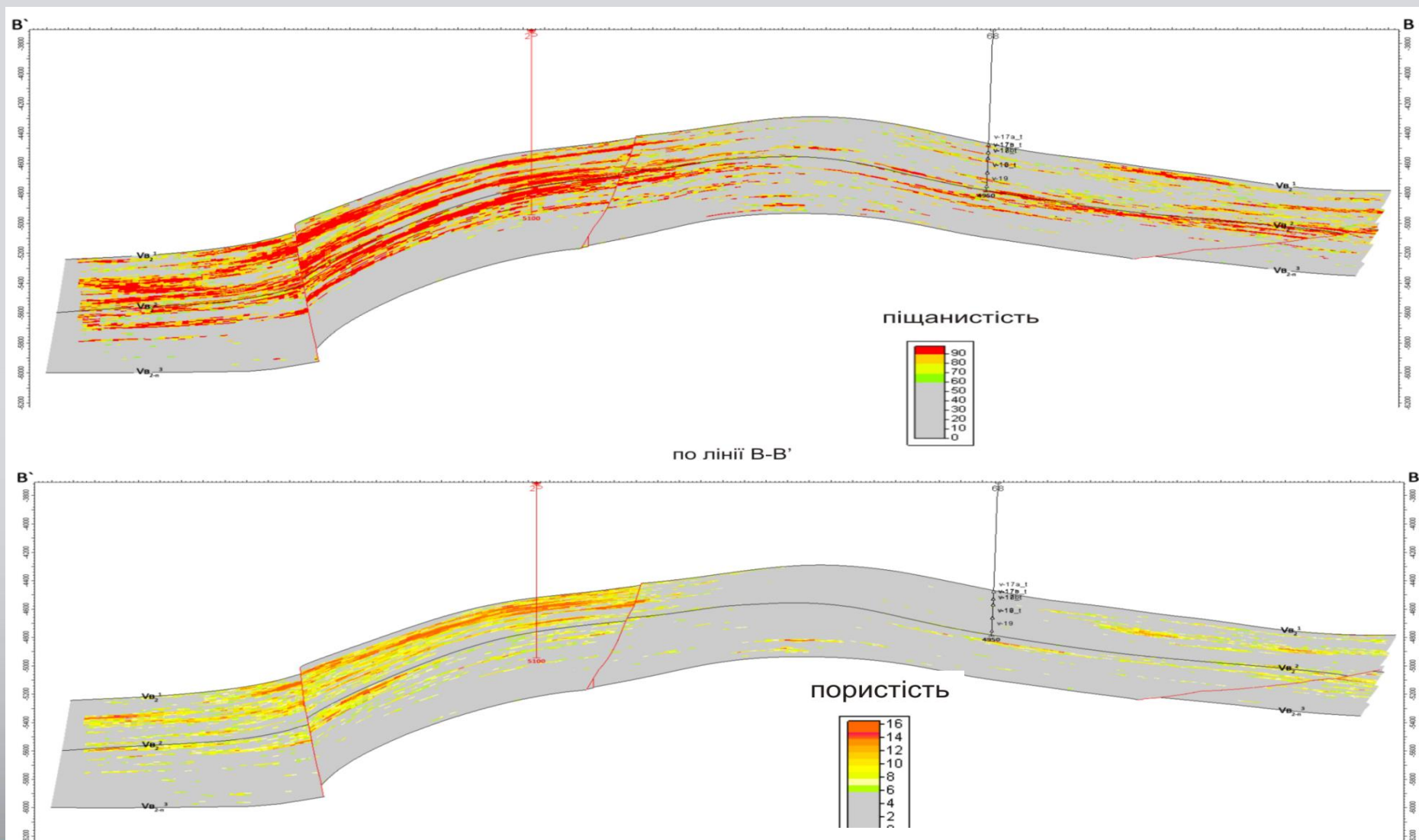
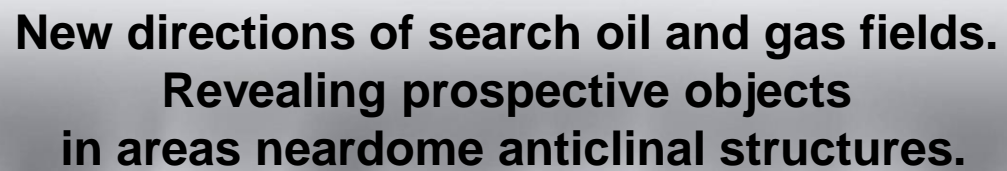
Глина, Песчаный аргиллит

Алеврит

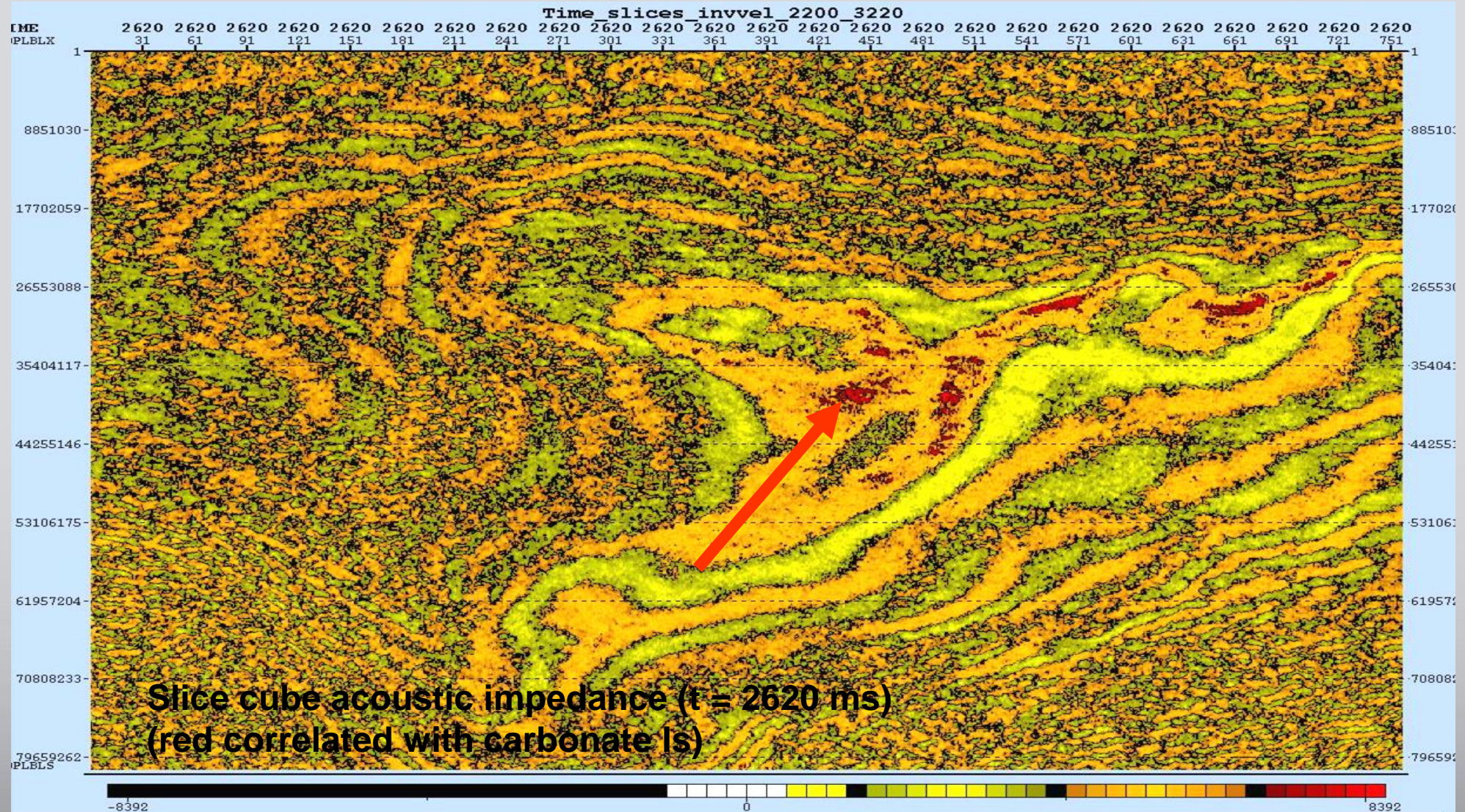
Песчаник

Тектонические нарушения

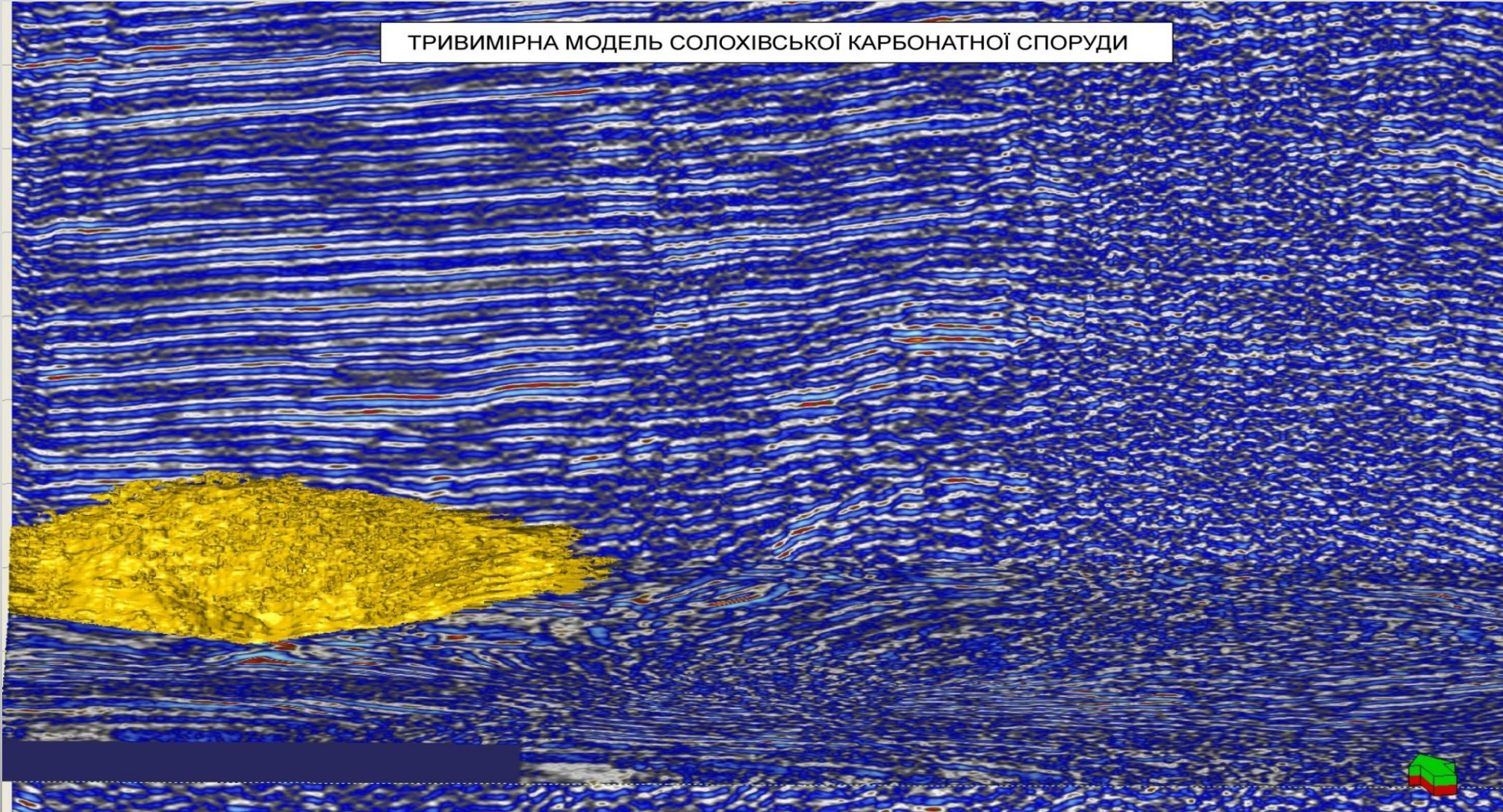
Заказчик	НАК "Нефтегаз Украины"		
Исполнитель	ЗАО "Укрнефтегазогеофизика"		
Тема	"Построение модели распределения коллекторов в продуктивных пластах в пределах Байрацкого нефтегазоконденсатного месторождения"		2005 г.
Приложение М. гор. 1:25 000 вместе с 1 см 25 мс. Гидрофиль договора	Многофакторная классификация атрибутов временного разреза в интервале C1s2-C2b. Профиль 94с.		
Отвественный исполнитель	гл. инженер Залогаренко В. Я.	Составили	Шамолович Г. И. Карлукина Е. Б. Шестаков В. И.
	гл. геофизик Залогаренко В. В. вед. геолог Несина Н. И.		



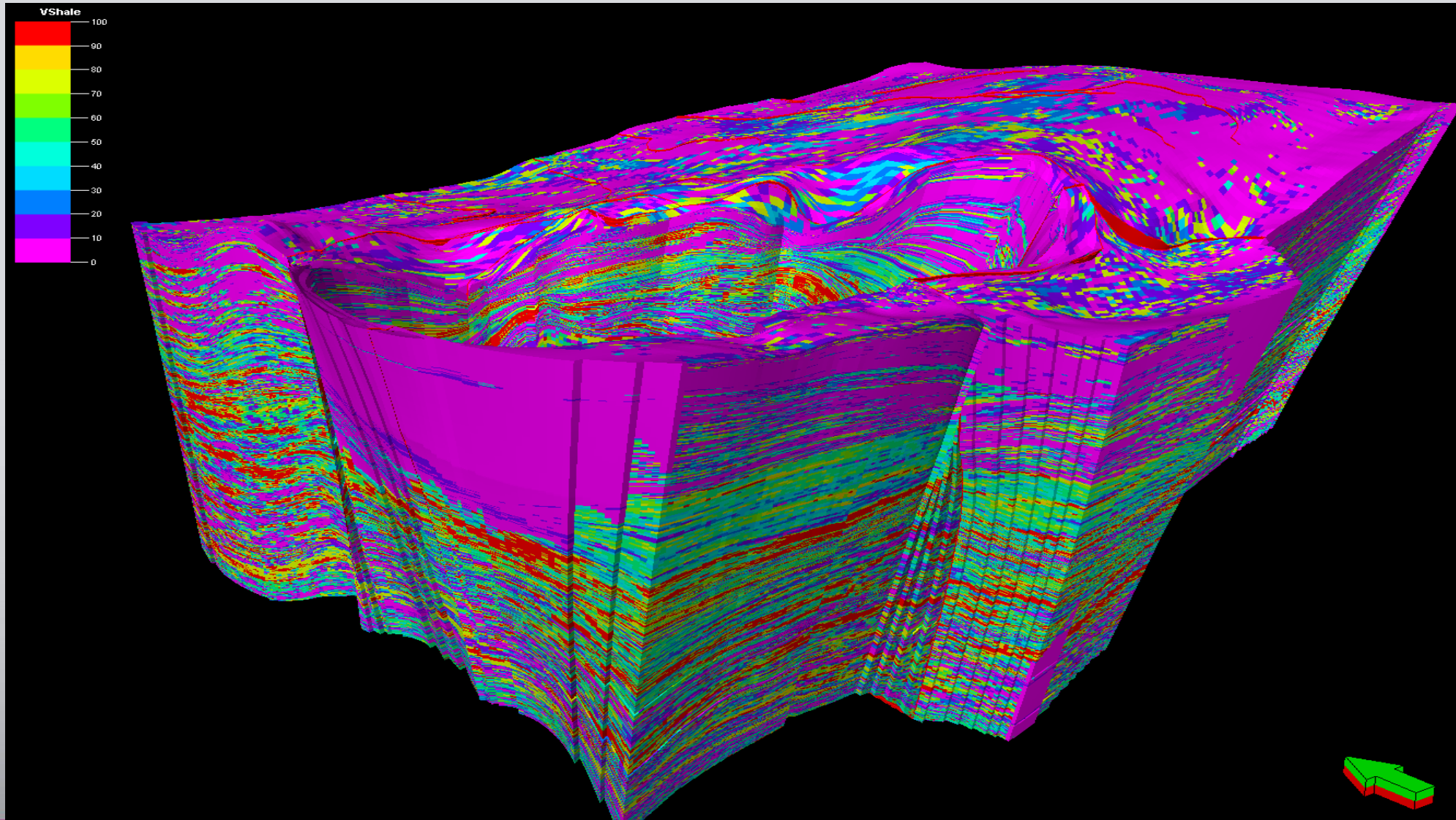
New directions for search oil and gas fields. Identification of objects with high carbonate fractured rocks.



New directions for search oil and gas fields. Nontraditional objects, revealing that older technology was difficult.



New directions for research. Forecast of development of shale according to 3-D seismic



Consulting.

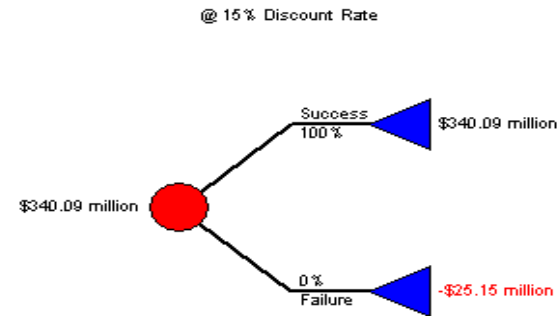
Economic evaluation of new areas.

AS\$ET Screening

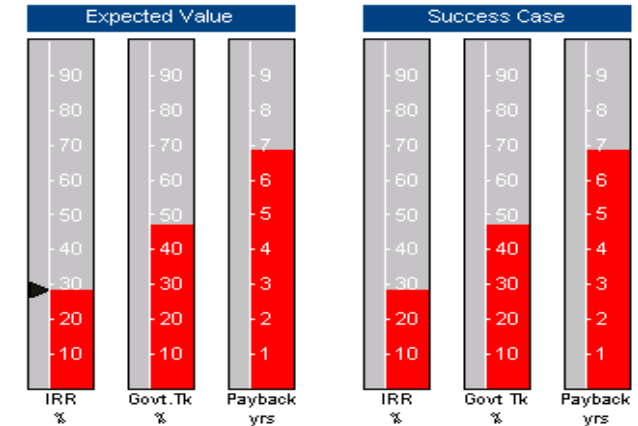
Technical Assumptions		
Situation	Offshore	
Region	Latin America	
Country	Brazil	
Basin	Campos Basin Tertiary	
Primary Product	Oil - Basin Level Data	
Oil Reserves	250	MMbbls
Gas Oil Ratio	516	scf/bbl
Peak Productivity	10	%
Plateau Duration	1	yrs
Decline Rate	10	%
Well Productivity	3	Mbopd
Depth to Top Pay	8322	feet
Water Depth	5135	feet
Oil Price	24	\$/bbl
Gas Price	3	\$/Mcf
Exploration Wells	1	No.

Fiscal Terms		
1998 Roy/Tax terms Deep Water > 400M		
ROYALTY RATE (%)	8	
EXCISE TAX RATE (%)	7	
SERVICE TAX RATE (%)	4	
COFINS TAX RATE (%)	3	
UNEMPLOYMENT TAX RATE (%)	0.65	
COFIN CREDIT OF 33% RATE (%)	0	
INCOME TAX RATE (%)	Calendar Year (YYYY)	
	34	2000
	33	2003
1ST PROD YR DEDUCT	Producing Rate - Total	

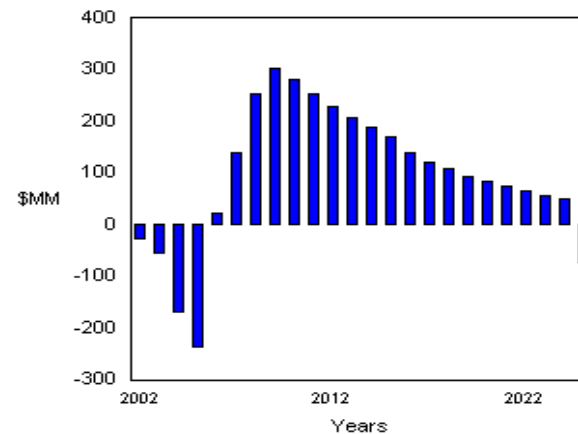
Expected Net Present Value



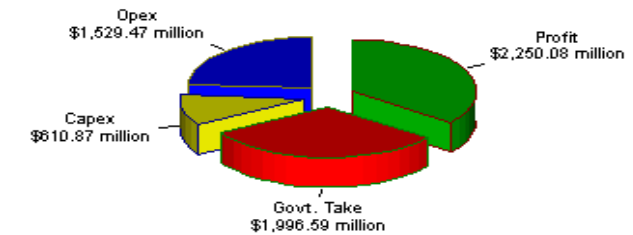
Economic Indicators



Success Case Net Cash Flow



Success Case Income Components





Field geophysical investigations

Activities: 3-D, 2-D-seismic, gravimetric, magnetic, electrical, and other field geophysical surveys and PM VSP

